

EXTRUTECH

# Aqua-Tank Panel System

Using EXTRUTECHFORM®  
Wall Panel System

This durable, long lasting system is designed for ease of sanitation and maintenance. Panels are a full two feet wide, cut to required lengths and snap together for quick installation. The Extrutech Aqua-Tanks offer a non-porous, prefinished, bright white surface on both sides, reducing finishing and installation time while providing a easy to clean, sanitary, solid structure.



Tank Sizes up to 12' High and 60' Diameter



Two foot wide panels snap-together for quick installation.

## Advantages:

- Quick installation, never needs paint
- Perfect where corrosion can be a problem
- Two foot wide panels - fewer seams
- Custom cut panel kits to 12 feet high
- Snaps together for quick installation
- Double spline, E-locking system
- Use standard rebar reinforcing methods
- Water proof - corrosion proof
- Panels will not rust, rot, or flake
- Resists mold, mildew, bacteria growth
- Low V.O.C. panels with honeycomb interior walls for maximum panel stability
- Protective film that is easy to peel off keeps panels clean during construction



1

Assemble



2

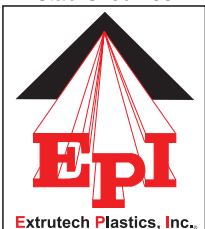
Brace



3

Fill with Rebar and Concrete

Established 1992



ISO 9001 QMS Certified

Innovative building products from:

**EXTRUTECH PLASTICS, INC.**

5902 W Custer Street, Manitowoc, WI 54220 - Local 920-684-9650  
Ph: 888-818-0118 - Fax: 920-684-4344 - Email: info@epiplastics.com

[www.epiplastics.com](http://www.epiplastics.com)



EXTRUTECH

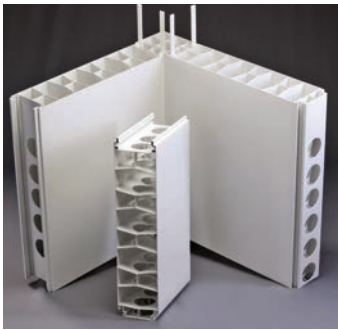
# Aqua-Tank Panel System

Using EXTRUTECHFORM®  
Wall Panel System

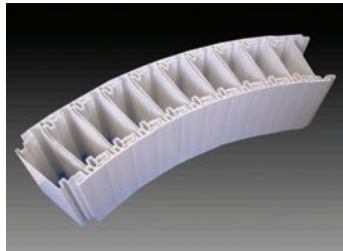
Extrutech Aqua-Tanks are constructed using our “stay-in place” concrete FORM Panel System for poured walls. Is a quick set-up, pre-cut system, that provides a smooth, non-porous, easy-to-clean, pre-finished concrete wall in thickness of 6" and 12". Tank sizes are available up to 12' high and 60' diameter. Ideal where sanitation is critical.



Extrutech Concrete FORM Panel Storage Tank  
6" and 12" thick walls, 9' high and 30' diameter  
Volume = 6,361.73 gallons



P624 FORM PANEL  
U.S. Patent 8,677,713  
Canadian Patent 2,833,490  
6" thick x 24" wide  
Lengths 3' to 12'



P645 CURVED PANEL  
6" thick x 2.5" wide  
Lengths 3' to 12'



Example of Interior Bracing

**Benefits:**

- Fifteen year warranty
- Strong - forms fill with concrete
- Sanitary - easy to clean
- Waterproof - no rot, rust or fade
- Smooth - non-porous surface
- Installs quickly and easily
- Industrial grade PVC
- Highly reflective
- Stain-resistant
- Low-maintenance - durable



Extrutech 9' high x 30' diameter tank

**Recommended Uses:**

- Food Processing
- Dairy Facilities
- Cheese Plants
- Bottling Plants
- Aquaculture
- Swimming Pools
- Commercial Properties
- Waste Water Treatment Plants
- Water Tanks
- In-ground or above-ground

Established 1992



ISO 9001 QMS Certified

Innovative building products from:

## EXTRUTECH PLASTICS, INC.

5902 W Custer Street, Manitowoc, WI 54220 - Local 920-684-9650  
Ph: 888-818-0118 - Fax: 920-684-4344 - Email: info@epiplastics.com

[www.epiplastics.com](http://www.epiplastics.com)

