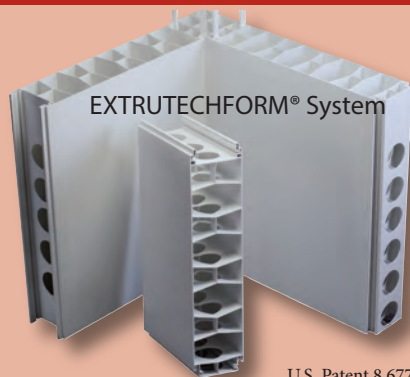


# Extrutech Concrete Wall Forms

## Affordable Replacement Housing



6" Thick Panel  
8" Thick Panel

U.S. Patent 8,677,713  
Canadian Patent 2833,490  
Mexican Patent 344,648

Extrutech FORM System is a **Stay-In-Place Concrete Form** for poured walls. It is a quick setup, pre-cut system, that provides a smooth, non-porous, easy-to-clean, finished concrete structural wall in 6" and 8" thick forms. Insulated panels are also available. Ideal for areas where moisture can be a problem, making the Extrutech FORM System a labor saver for both the contractor and the owner.

Our durable panels are two feet wide, extruded to desired length based on building dimensions, and snap together quickly for easy installation. They provide a non-porous, pre-finished, high gloss surface on both sides, reducing both installation and finishing time, while providing an easy-to-clean, sanitary, solid, load-bearing wall. Your building will be ready for trusses, windows, and doors once the concrete has cured!



*Modern, Durable Housing Using Extrutech Stay-in-place Concrete FORM Panels*

- Concrete FORM System
- Panels will not rust, rot or flake
- Cleans easily - low maintenance
- 6" and 8" thick stay-in-place concrete FORM
- Resists mold, mildew, bacteria growth
- Low maintenance, easy-to-clean, with water/mild cleaner
- Straight and crisp looking walls
- Water and corrosion-proof
- Custom cut panel kits to 20 feet
- Brightens the interior of any building
- Fewer seams - 2 foot wide panels
- Available as a high gloss, hard surface in colors white, gray or beige
- Available in pre-cut kits

*Ask for Extrutech And Get The Best Surface, Shine, and Strength in the Industry!*



**Extrutech Plastics, Inc.**

Phone: 888-818-0118

www.epiplastics.com E-mail: info@epiplastics.com



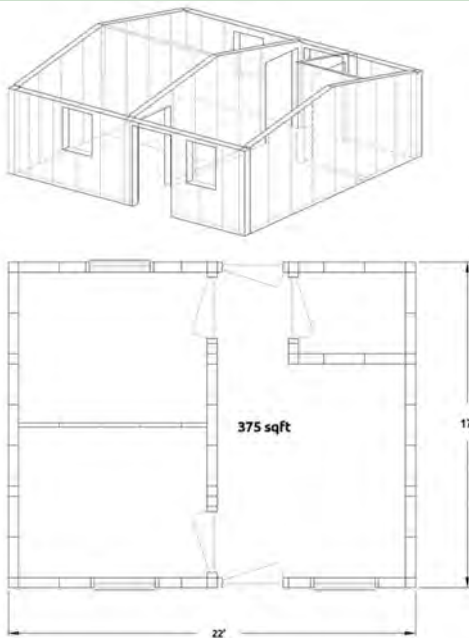
# Extrutech Concrete Wall Forms

*Wherever the Getaway May Take You*

By using the Extrutech Forms you can build a house or cabin that will last a lifetime. Structures built with this form and filled with rebar and concrete can withstand strong winds and torrential rains and remain standing. The house panels will not rust, rot or float away. These structures are waterproof and insect proof. You can use these interlocking forms to build any small or medium size structure of your design. They are a perfect building component for wet, windy climates in our hurricane zones of North America.

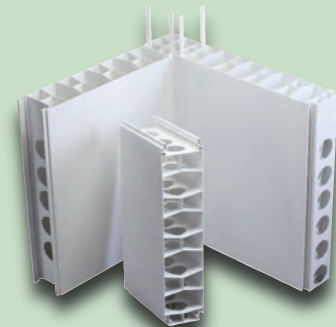


*Back to Nature Getaway Using Extrutech Stay-in-place Concrete FORM Panels*



Extrutech Plastics can manufacture these structures to your design and specifications. We can put together complete kits that include all the walls, doors, windows, ceiling panels, roof systems and all necessary trims for the complete house. You will need to supply the cement for the walls and floor and furnish the mechanicals as required by your local building codes.

Send us your plans and we can provide a material quotation at no cost to you.



EXTRUTECHFORM® Panel

*Manufacturing American-Made PVC Wall and Ceiling Panels for 26 Years!*



Extrutech Plastics, Inc.

Phone: 888-818-0118

www.epiplastics.com E-mail: info@epiplastics.com

