

Wall and Ceiling Products

Moisture and Corrosion Proof Panels

ICC
ES
LISTED
ICC ESR-4583

12" P3000 Beaded Panel (Top)

12" P1300 Flat Panel (Bottom)

Extrutech Plastics Inc., provides high-quality, moisture and chemical-resistant products for walls and ceilings, to a wide variety of markets. We have a dedicated, focused staff that is always available to help you determine which of our products best meet the needs of your commercial, residential, or agricultural projects. From initial inquiry through delivery, our staff is here to serve you.

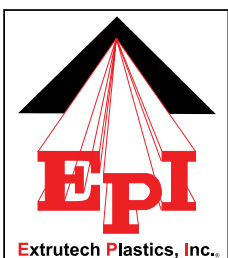
Since 1992, we have been committed to developing a product line that will serve our customers, with great looking, cost-effective products that fit their special requirements. From sun rooms to clean rooms, we have a product that will cover your needs! We are constantly developing innovative ways to improve current methods and develop new products that meet the needs of our customers.



Milking Parlor



Indoor Swimming Pool



EXTRUTECH PLASTICS, INC.

888-818-0118 | www.epiplastics.com

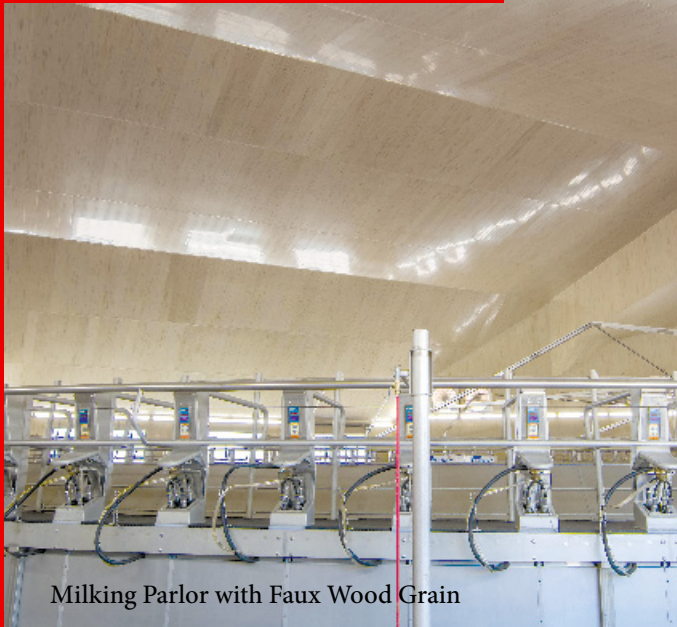
5902 West Custer Street

Manitowoc, WI 54220

ISO 9001:2015 QMS Certified



P1300 Flat Panel
P1600 Flat Panel



Milking Parlor with Faux Wood Grain



Car Wash Walls and Ceiling



Colored Accent

12" & 16" Flat Panels

For Walls and Ceilings

Poly Board® Flat Panels have a smooth reflective surface that dramatically improves overall reflective lighting. The panels are available in custom lengths (cut to the inch).

The panels are easy to clean and continue to look great in corrosive or high moisture areas.

Colored panels have a 1 year limited warranty when used in interior applications. See product warranty for details and limitations.

Panels are made with 100% virgin, exterior grade PVC. The wall and ceiling panels have a tongue-and-groove design with a nailing fin along one side that makes installation quick and easy, with no exposed fasteners. For installation instructions visit www.epioplastics.com.



12" (P1300) Flat Panel Colors



12" (P1300) Wood Texture

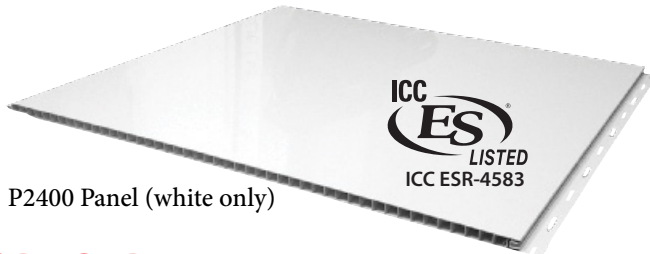


View all 1/2" Flat Panels

24" Flat Panels

For Walls

24" Poly Board® Flat Panels are made to cover a large area quickly. They are 24 inches wide and available in custom lengths (to the inch) to fit your project needs. The smooth reflective surface also improves overall reflective lighting.



P2400 Panel (white only)

PRODUCT DATA:

- Dimensions:
 - » P1300: 12" Panel 1/2 in. x 12 in. x 4 ft.–20 ft.
 - » P1600: 16" Panel 1/2 in. x 16 in. x 4 ft.–20 ft.
 - » P2400: 24" Panel 1/2 in. x 24 in. x 4 ft.–20 ft.
- Weights:
 - » P1300/1600/P2400: 0.69 lbs./sq.ft.
- Colors:
 - » P1300 - white, blue, yellow, red, green, gray, beige, and wood grain
 - » P1600/P2400 - white, beige, and gray
- Twenty year limited warranty for white panels used in interior applications.
- Mold and mildew resistant per ASTM D3273 & D3274.
- CSI- Master Format # 06600 (06 64 00).
- Meets ASTM E84-05 and CAN/ULC S102.2-03
- Class A rating for smoke and fire

RECOMMENDED USES:

- Commercial buildings: pharmaceutical process rooms, food processing, clean rooms, car washes, schools, food stands, indoor pool areas, garden centers
- Agricultural facilities: veterinary clinics, dairy barns, milking parlors
- Any wall requiring great looks and low maintenance
- In high moisture, salty, or acidic areas

STORAGE AND HANDLING:

For P1300, P1600, P2400, P3000 Panels
Material is shipped common carrier in standard packaging containing 5 panels per poly-bag. Store flat in a clean, dry area until ready to use.



Milking Parlor



Food Processing

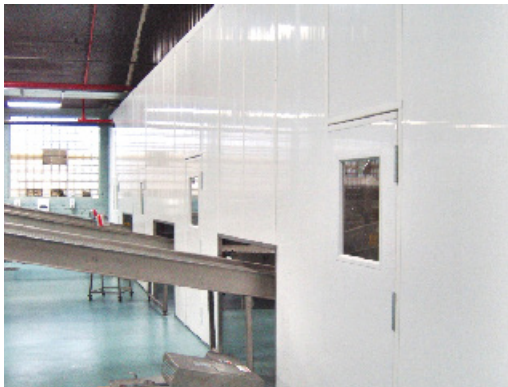


Cheese Processing Plant

EPI9000 Partition Walls



Stand-Alone Office



Food Processing Partition Wall

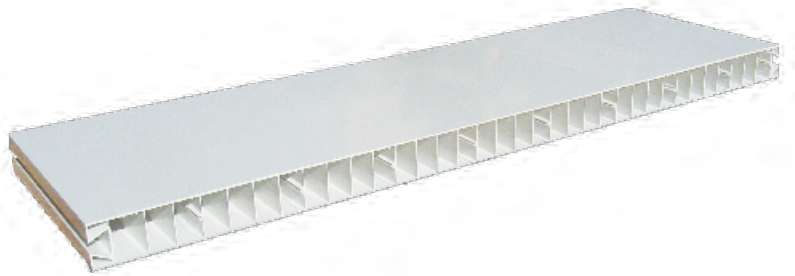


Partition Walls

Demountable Partition Walls

Flexible Wall Solutions

Partition Walls allow you the flexibility to construct interior demountable walls faster and easier. Durable, strong multi-chamber, interlocking wall panels are made of rigid, virgin polymers are easy to assemble. Panels lengths are cut to the inch of your specifications. With a finished surface on both sides of panel, it never needs painting.



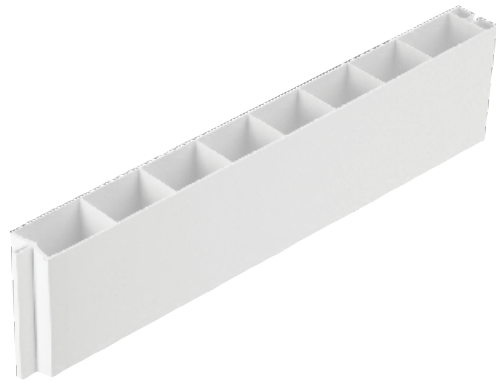
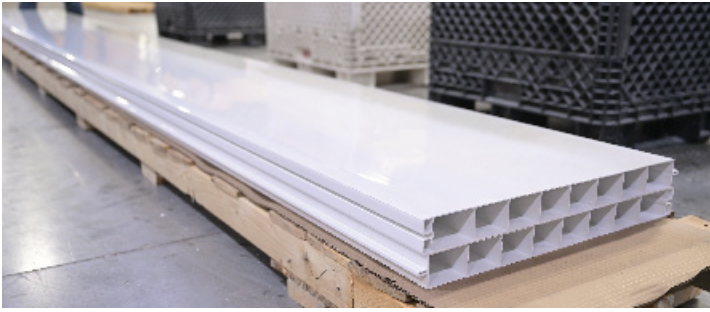
EPI9000 PRODUCT DATA:

- Dimensions: 1 3/4 in. x 36 in. x 4 ft.–20 ft.
- Colors: white, gray, beige
- Dovetail connections
- Weight: 1.75 lbs./sq.ft.
- 10-year warranty

PARTITION WALL FEATURES:

- Demountable
- Rigid Virgin Polymer
- Low maintenance, easy to clean
- Light-weight, easy to assemble
- Custom sizes available
- Moisture and rot proof, mildew resistant
- R-10, insulated panels available
- Finished surface on both sides
- Termite resistant





P224 PRODUCT DATA:

- Dimensions: 2 1/4 in. x 24 in. x 4 ft.–20 ft.
- Colors: white, gray, beige
- Tongue and Groove connections
- Weight: 2.0 lbs./sq.ft.
- 100% Recyclable
- 15-year warranty



PARTITION WALL RECOMMENDED USES:

- Commercial buildings:
 - » Food processing, clean rooms, car washes
- Agricultural facilities:
 - » Dairies, horticulture
- Residential:
 - » Garages and shops

P224 Partition Walls



Installation



Clean Room Partition Walls



Watch Demountable Wall Video

CP2400 Ceiling Panel



Cheese Processing



Panel Shown Inside Extrutech Fiberglass Grid



Drop Ceiling With Lighting

Suspended Ceiling Panels

Suspended Ceiling Panels offer a construction/retrofit product that gives you the ability to construct ceilings faster, easier and safer. Our non-porous panels are perfect for high moisture areas. They work with standard drop down grid systems, or you can purchase the fiberglass grid system directly from Extrutech.



RECOMMENDED USES:

- Car Washes
- Clean Rooms
- Food Processing
- Bottling Plants
- Agricultural
- Manufacturing Facilities
- Dairies
- Indoor Swimming Pools
- Concession Areas

FEATURES:

- Glossy, smooth, bright white surface
- 23 3/4" wide, and lengths of 2, 4, 6, 8, 10 and 12 feet.
- 20 Year Limited Warranty
- Class A E-84 rating for smoke and flame
- 3/8" thick
- Agriculture Canada Accepted
- ICC Approved Grid for Use in All Seismic Zones (ESR-1722)
- USDA Accepted

Accessories

For 1/2" Flat and Beaded Panels

Panel Trims Extrutech Plastics provides a number of high quality panel trims to give your project a clean finished look. Trims are available with a non-painted finish in 8', 10', 12', 14', 16' foot lengths, and color matched to requested panels.

Trims include:

- Inside and outside corners
- Wainscoting
- Crown molding
- Baseboards
- 45 degree-angled edges



(view all available trims on our website)



Door Video

All-Weather Doors are corrosion proof, bright white, with a smooth flat 1 3/4" thick PVC door panel and solid PVC frame with a weather strip sealed edge. They are available as single or double doors, in standard or custom sizes, as well as replacement door panels to fit existing frames. Our doors have the same features as our panels, so they are also a great fit in high moisture or corrosive areas.

Doors and Trims



Garage Installation



Double Door



Single Door

Additional Car Wash Building Solutions

Extrutech Form Walls



Concrete Form Walls offer a non-porous, pre-finished structural concrete wall with a bright white surface on both sides, reducing finishing and installation time while providing an easy to clean solid structural wall. Limited Lifetime Warranty.

ICC ES Listed: ESR-4250, ESL-1129, and ESL-1209



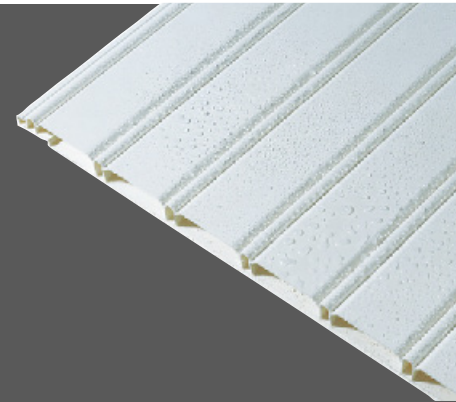
US Patent #: 8,677,713
CA Patent #: 2833,490
MX Patent #: 344648

Beaded Panels



Beaded Panels are 1/2" thick and made with 100% virgin, exterior grade PVC. They are 12" wide with a tongue-and-groove design, and are available in white, gray, beige, and wood grain.

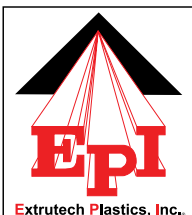
Use our beaded panels as wainscoting, or where decorative accents are needed.



Single & Double Doors



All-Weather Doors are corrosion proof, bright white, with a smooth flat 1 3/4" thick PVC door panel and solid PVC frame with a weather strip sealed edge. They are available in standard or custom sizes. Our doors are great for high moisture areas.



EXTRUTECH PLASTICS, INC.

888-818-0118

info@epiplastics.com | www.epiplastics.com

