

EXTRUTECH PLASTICS, INC

"Manufacturer of American Made Wall and Ceiling Panels"



EXTRUTECH

ISO 9001:2015 Certified for Quality

P224 Partition Wall Panel Installation

2 1/4" - Corrosion-Proof Panels

Product Size: 2 1/4" x 24" wide, rigid PVC panels

Available Lengths: Cut to the Inch (4' – 24' Foot)

Installation - P224 Partition Wall (over view)

1. Clear work area for wall installation and cordon off work area.
2. Install wall system in accordance to instructions and project design details, at location indicated on drawing and to builder's direction.
3. Review proper tools, safety equipment and lifts are on hand; in good working order.
4. Layout wall position on floor and plumb to ceiling. Mark plumb line on side walls.
5. Install perimeter trim: first base channel, side and top (channel or angle install additional base channels and others, as you install wall panels.
Allow for panel expansion in both directions and allow for ceiling movement.
6. Cut panels lengths 1/2" short of wall height and provide a 1/2" gap from the first and last panels from the existing walls to allow for expansion width of wall panels.
7. Install first panel, with the tongue cut off, (see last page) and install tongue side to wall, tip up and slide into place allowing 1/2" gap to wall, which is covered up by the 1 1/2" width of the perimeter channel, plumb panel edge, apply fastener as required per project requirement (review with builder) for panels in perimeter channels while allowing for panel expansion.
8. Install next panel - slide into place so edges of first and second are snug together, check for plumb. Repeat process to last panel.
9. Continue to install trim and panels as you work the length of the wall.
10. Cut last panel to required width (less 1/2" to allow for panel expansion) install wall trim using angle or channel; or cap end of wall with U-channel. (See details on last page)

Warnings and Special Notes

Read and follow all safety instructions.

Read and follow product specifications and warranty before installation.

Warranty is void if panels are not installed according to instructions.

Keep panels 24" from Heaters and shield Radiant Tube Heaters.

Panels are made to be installed vertically, contact Extrutech to review other methods.

Steel reinforcement can be installed in the panels as an option (review with builder).

Door and widow opening options also available contact Extrutech about this option.

Insulated panels are available contact Extrutech about this option.

ALLOW for panel expansion and structural movement when planning installation.

DO NOT USE Staples or Nails to hold panels in place.

DO NOT USE Hilti® or 22 type nailing gun to hold panels in place.

EXTRUTECH PLASTICS, INC.

5902 W. Custer Street • Manitowoc, WI 54220 • Phone 888-818-0118 • Fax 920-684-4344

www.epiplastics.com • e-mail: info@epiplastics.com

EXTRUTECH PLASTICS, INC

"Manufacturer of American Made Wall and Ceiling Panels"



Clean work area

Clean work area for wall installation allowing 15 - 20 ft area for tipping up wall panels. Mark wall position on floor and plumb to ceiling. Mark plumb line on side walls and ceiling.

Panel cutting instructions

Read and follow all Safety Instructions for power and hand tools

Wear eye and ear protection and hard hats.

Cut through product slowly, don't rush.

Powered miter saw with fine tooth blade.

Temperature is a factor when working with vinyl. Warm weather is no problem but cold temperatures can create some issues.

Install perimeter mounting trim

1. Floor trim installation - starting at one end, apply two beads of water proof caulk* 1/2" in from edge of base channel; install (channel or angle) along the edge of marked plumb line and secure in place with fasteners; example: (3/16"x 1 3/4" Masonry(Tapcon) Hex Head), ** Install fastener 24"-30" on center - typical for all trim installations. **

2. Wall trim installation; From the same starting point plumb and install vertical channels, setting the side wall channel so one end is resting on the top edges of the base channel on the floor, checking for plumb before final tightening. If another channel is required on the side walls, add to reach required height. Butt the ends together. Check that it is plumb and in-line with the first and secure with same fasteners. There should be a 1 1/2" space to the ceiling for the Ceiling channel or angle that is to be mounted to the ceiling.

3. Ceiling trim (channels or angles) can now be installed. The ceiling may require some type of structural framing that the trim (channels or angles) can fasten securely to, using a minimum of 2x4 lumber framing or 18 gage 1x3" steel channels installed 2 ft. on center.

Panel Installation

Allow for panel expansion in both directions and allow for ceiling movement.

Cut Panels lengths 1/2" short of inside channel dimension to allow for ceiling movement (review ceiling deflection with builder) and panel expansion.

Taller panels will require an aerial or scissor lift to safely raise panels.

Install first panel, with tongue cut off, tongue side first, and groove side facing to center of room, tip up and slide into place, plumb panel edge.

Secure Panels

Allowing for panel expansion in both directions, as determined by builder, secure plumb panels to (channels/angles) w/ fasteners, 2'- 4' foot apart along the top of each panel; using 1/4" x 2 3/4" bolts thru the panels at top. With the panels secured properly at the top and the use of the panels large tongue and groove edge; fasteners are not required on the face of the panel or bottom and sides, unless as determined by builder additional fasteners are required, due to wall height, wind loads, air pressure changes or other effects.

EXTRUTECH PLASTICS, INC.

5902 W. Custer Street • Manitowoc, WI 54220 • Phone 888-818-0118 • Fax 920-684-4344

www.epiplastics.com • e-mail: info@epiplastics.com

EXTRUTECH PLASTICS, INC

"Manufacturer of American Made Wall and Ceiling Panels"



Install Next Panels

Install next panel - Slide into place so edges of first and second are snug together, check for plumb and secure in place as first at the top and bottom. Repeat process to last panel. Continue to install trim and panels as you work the length of the wall. No fasteners required along edge of panel face. Wipe panels of construction dust as installing.

Installing Last Panel

Cut last panel to required width (allow room for panel edges to fit together) and allow for 1/2" gap to wall for expansion install wall trim using angle or channel; or with U-channel. Secure panel as needed per design requirements.

Cleaning and Maintenance of Panels

Clean the panel of any grease marks with 409 cleaner, a citrus cleaner or Extru-Brite (available through Extrutech Plastics, Inc. 888 818 0118) and review our Maintenance and Cleaning instructions for additional information.

Recommended Fasteners and Suppliers:

Note: Fasteners can be provided with panels if requested during the quoting process or purchased locally

Fasteners

Supplier: **FASTENAL®** www.fastenal.com

Applications: - Please read and follow fastener's preparation and installation instructions.

Masonry applications (Base Channel installation)

(3/16" x 1 3/4" Masonry (Tapcon®) Hex Head

Panel Fasteners

(1/4 x 2 3/4" Stainless Bolts(70014) w/lock nuts (70860) and washer (71013)

(# 10 x 1/2" Thread cutting (0144126) (Hex Head)

Sealant - Silicone Caulk

Supplier: DAP® www.dap.com Silicone Rubber Sealant, Caulk

Purchase through local Building Supply Center

Description:

Clear 100% Silicone Rubber Sealant, Caulk

Construction Adhesive - PL400® or Liquid Nails®

Supplier: Loctite® Purchase through local Building Supply Center

Description

PL400® Heavy Duty Construction Adhesive, Caulk.

Liquid Nails® Duty Construction Adhesive, Caulk.

EXTRUTECH PLASTICS, INC.

5902 W. Custer Street • Manitowoc, WI 54220 • Phone 888-818-0118 • Fax 920-684-4344

www.epiplastics.com • e-mail: info@epiplastics.com

EXTRUTECH PLASTICS, INC

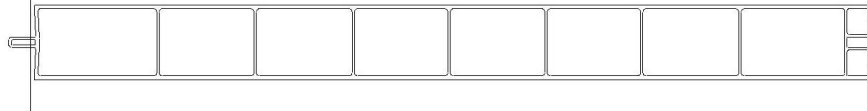
"Manufacturer of American Made Wall and Ceiling Panels"



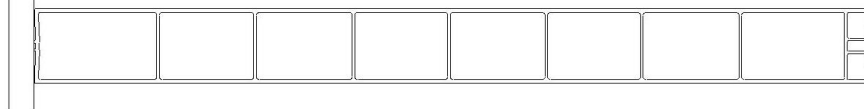
Panel Notes & Details:

Allow for panel expansion in both directions and allow for ceiling movement.

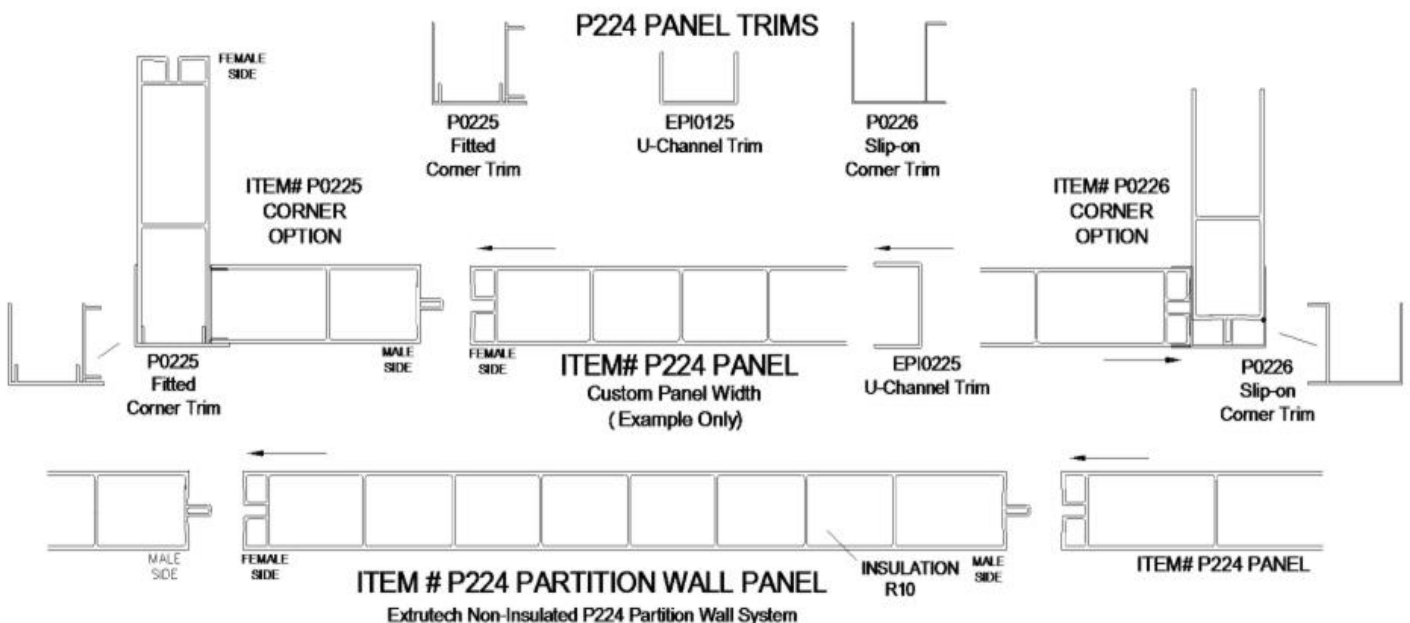
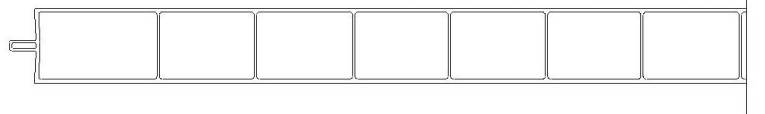
1. CUT TONGUE OFF FIRST PANEL BEFORE INSTALLATION



2. ALLOW 1/2" GAP FROM WALL TO FIRST PANEL



3. ALLOW 1/2" GAP FROM WALL TO LAST PANEL



EXTRUTECH PLASTICS, INC.

5902 W. Custer Street • Manitowoc, WI 54220 • Phone 888-818-0118 • Fax 920-684-4344

www.epiplastics.com • e-mail: info@epiplastics.com

EXTRUTECH PLASTICS, INC

"Manufacturer of American Made Wall and Ceiling Panels"



P224 Door and Window Installation

Determine door or window location and layout opening on wall panels

Panel can be pre-cut from the factory or cut on site

It is best that the opening is cut prior to the walls installation

Wear eye and ear protection and follow all safety Instructions for power tools

Cut through product slowly, let the blade do the cutting, forcing the blade thru the panels can cause chipping around the cut. Use a powered circular saw with fine tooth blade.

If possible located opening so one side is at the edge of a full panel,

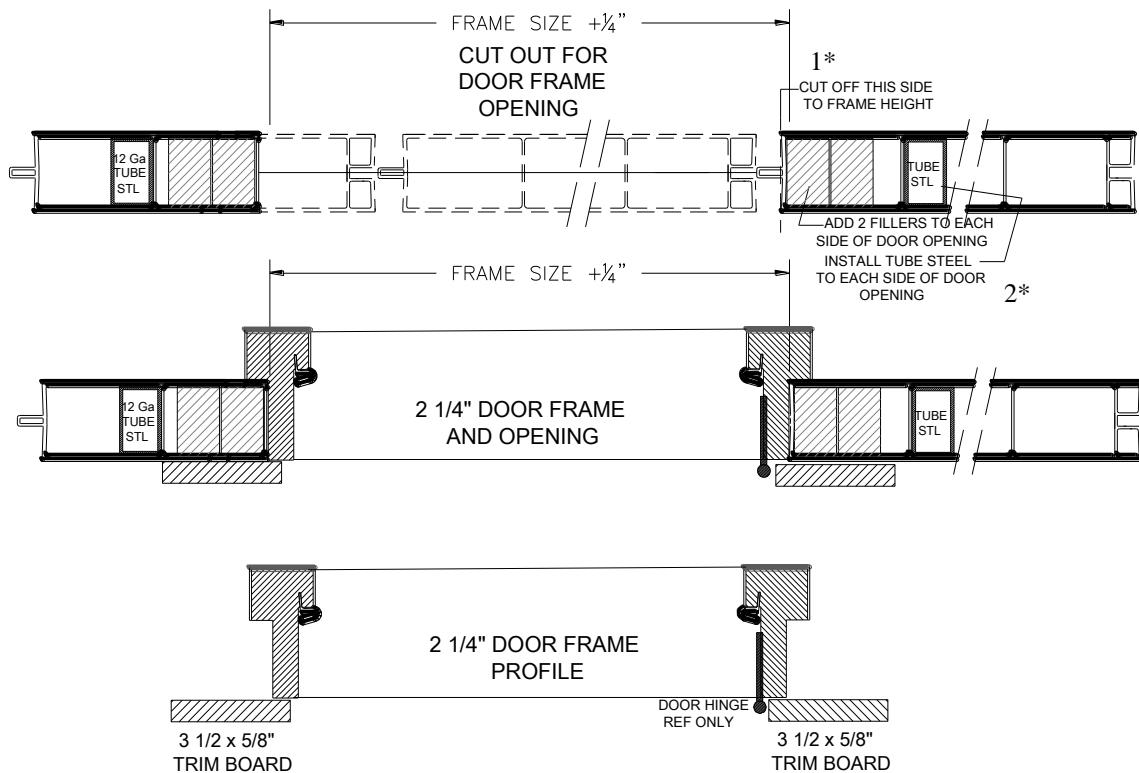
At opening location, cut off tongue on panel edge*1, needed to create a flat edge.

Provided with the panels will be fillers*2 for around the perimeter of the opening.

Longer fillers are provided for each side of the opening*3 and shorter fillers for the top and bottom of the opening and can be screwed in place or moved as needed to provide a solid structure to secure the unit to the wall.

Doors will come with a Frame to fit the P224 panel thickness and can be install as you would a standard door. *4 Larger door opening will require bracing of the wall

Depending on the size.



EXTRUTECH PLASTICS, INC.

5902 W. Custer Street • Manitowoc, WI 54220 • Phone 888-818-0118 • Fax 920-684-4344

www.epiplastics.com • e-mail: info@epiplastics.com

EXTRUTECH PLASTICS, INC

"Manufacturer of American Made Wall and Ceiling Panels"



Window Installation for P224 Panels

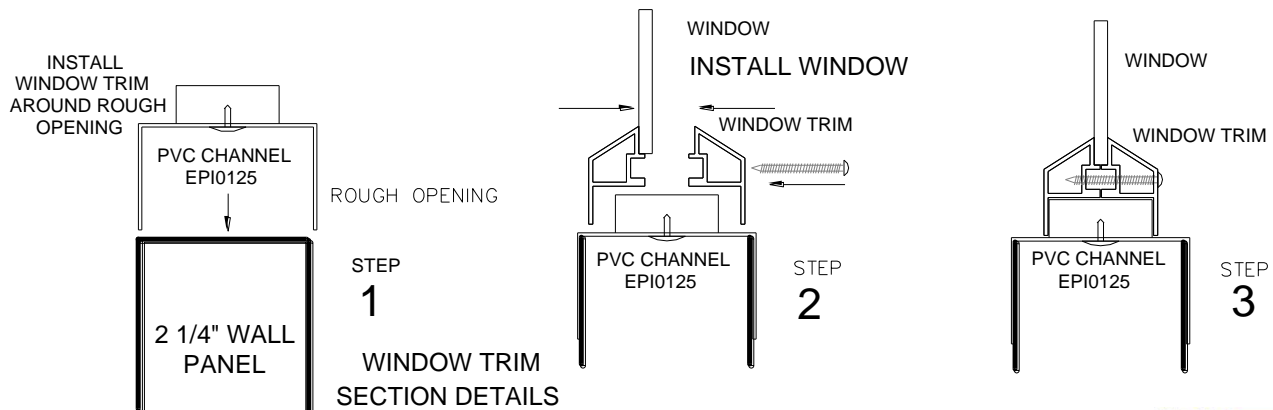
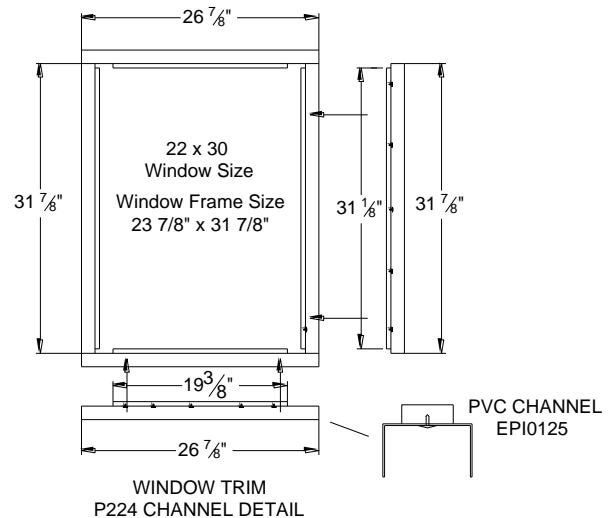
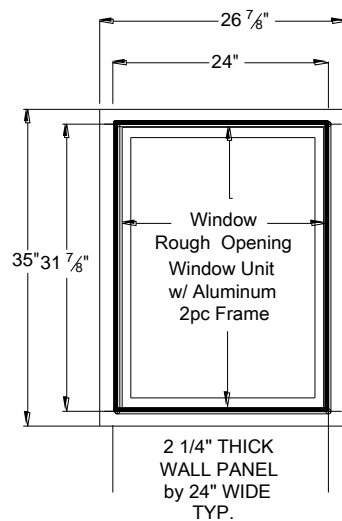
Windows will come with a Trim to fit the P224 panel thickness

If possible located opening so one side is at the edge of a full panel.

At opening location, cut off tongue on panel edge, needed to create a flat edge.

The preferred window size is the Extrutech 22" x 30" window installation, it works out to be the same width as the panels, so you just need to cut a panel for the height you want the window and cut a panel for above the window. Allow 24"W x 32 1/8"H for your rough opening.

Install the window trim around the opening in the following order: bottom, top, and then sides. Adjust trim so outside edges are even. Next remove the window and screw package from packaging, and to help with installation place a orientation mark on the inside frame surface of each frame half, next remove the screws that hold the two halves together. Test fit half the frame in the opening; you will need two people, one on each side of the wall. One person installs and holds the frame with the glass and the other installs the frame side, use the orientation marks so the screw holes line up; install screws in opposite sets (top/Right-Bottom /left) and so on around window and set screws so they are just snug.



EXTRUTECH PLASTICS, INC.

5902 W. Custer Street • Manitowoc, WI 54220 • Phone 888-818-0118 • Fax 920-684-4344

www.epiplastics.com • e-mail: info@epiplastics.com

