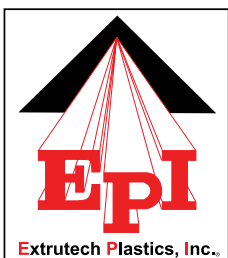


EXTRUTECH Custom Extrusions: The Double-Walled, Large-Scale, Advantage



Extrutech Plastics, Inc. specializes in the production of high quality, custom designed, complex, hollow, and foam-filled PVC profiles. We manufacture close-tolerance profiles, utilizing state-of-the-art extrusion tooling, and equipment.



EXTRUTECH PLASTICS, INC.

888-818-0118 | www.epiplastics.com

5902 West Custer Street

Manitowoc, WI 54220



Our Capabilities

Custom Extrusions

We are experts in the design and manufacturing of close-tolerance profiles utilizing state-of-the-art extrusion tooling and equipment.

We can produce rigid and expanded cellular PVC profiles up to 40" wide and 7" high, to any length.

Quality Control

Quality control is an integral part of the production process at Extrutech Plastics. We incorporate the principals of Statistical Process Control to produce consistent profiles that meet your demanding specifications, production, run after production run.

Our fully-computerized manufacturing plant provides our customers with accurate and timely: billing, quality control reports, production status, and shipping details. Extrutech is ISO 9001-2015 certified.

Tooling

Tooling is the key to obtaining high quality profiles, manufactured to precise specifications. Our extrusion toolmakers are the finest in the world, with over 40 years of experience in the production of high quality dies and calibrators. They use only the finest metals, to insure long tool life.

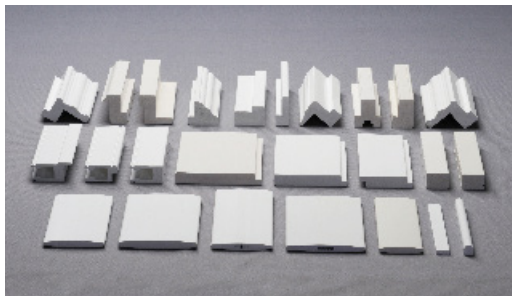
Once completed and approved, the finished dies and calibrators become the sole property of the customer.



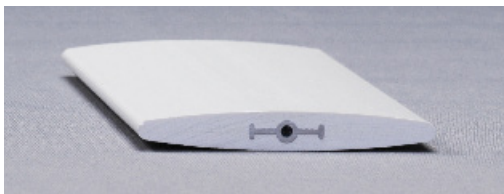
Hollow Extrusions



Spa Panels



Solid Extrusions



Reinforced Cellular Louver



Desktop Door

Co-Extrusion / Custom Printing / Custom Painting / Machining

Extrutech is capable of co-extruding flexibles on rigid or capping of substrate material with a topcoat finish of any color or shade.

We can also custom print profiles in line and aid in custom packaging and bar code labeling. Custom machining and welded profiles are also available.

Project Highlight:

NOvA Neutrino Detection Cells

Project Overview:

Fermi National Accelerator Laboratory, which manages the NOvA project, selected Extrutech to manufacture the custom plastic cells they needed for their neutrino detectors. The detectors are made up of 344,000 cells of extruded, highly reflective plastic PVC filled with liquid scintillator.

“We are proud to have been involved, from early testing through production, with this incredibly important extrusion project. Our dedicated team made it possible to meet the quality control standards of the U.S. Department of Energy, and meet the required time and budget.”

- Extrutech President, Greg Sheehy.

Timeline:

- 2007 - FermiLab receives DOE approval and budget
- 2008 - Extrutech provides first extrusion test sample
- 2010 - Extrutech production and shipments begin
- 2012 - First module laid in place
- 2013 - Final PVC cells are produced by Extrutech
- 2014 - First neutrino detection (February)
- 2014 - Fully operational (October)

Production:

Working three shifts - 24 hours a day, 7 days a week, with minimal down-time - Extrutech Plastics was able to manufacture over 22,000 units, each measuring about 51 feet long x 25 ½ inches wide, with a thickness of 2 ½ inches. Set end to end the sheets would cover 216 miles.

Over the course of the project, Extrutech shipped 396 semi-truck loads to Ash River in Northern Minnesota for assembly and installation.

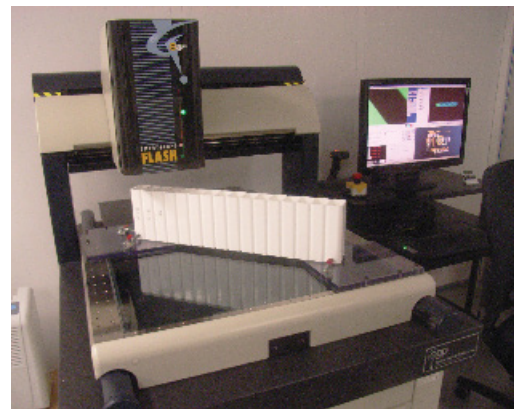
Result:

Weighing in at over 15,000 tons, the detector is 256 feet long, 51 feet wide, and stands 51 feet high. The PVC tubes are the largest PVC structure ever built.

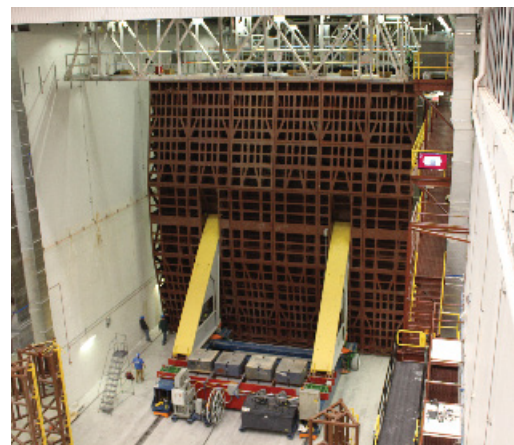
FermiLab’s NOvA experiment is helping scientists determine the role that ghostly particles called neutrinos played in the evolution of the cosmos.



Section of custom cells ready for shipment



Testing Prototypes



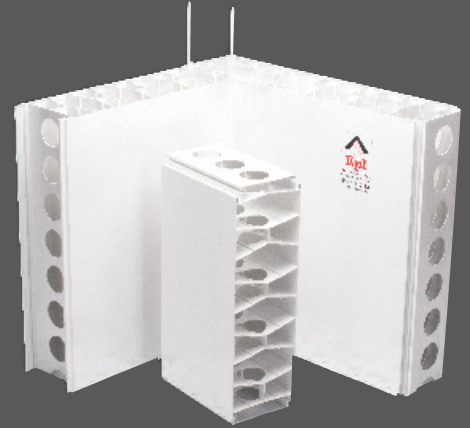
Standard Extrutech Products

EXTRUTECH Form Walls



Concrete Form Walls offer a non-porous, pre-finished structural concrete wall with a bright white surface on both sides, reducing finishing and installation time while providing an easy to clean solid structural wall. Limited Lifetime Warranty.

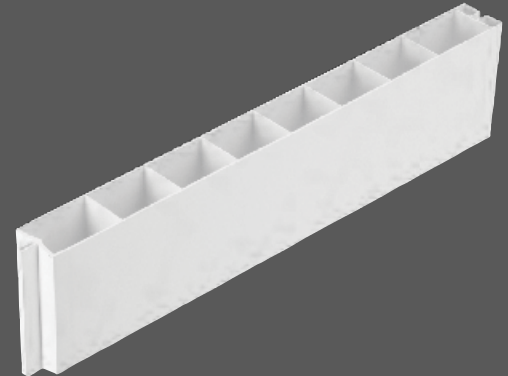
ICC ES Listed: ESR-4250, ESL-1129, and ESL-1209



Partition Walls



Partition Walls allow you the flexibility to assemble interior demountable walls faster and easier. Our durable, strong, multi-chamber, interlocking wall panels are made of rigid, virgin polymers. With a finished surface on both sides of panel, it never needs painting.



Single & Double Doors



All-Weather Doors are corrosion proof, bright white, with a smooth flat 1 3/4" thick PVC door panel and solid PVC frame with a weather strip sealed edge. They are available in standard or custom sizes. Our doors are great for high moisture areas.



EXTRUTECH PLASTICS, INC.

888-818-0118

info@epiplastics.com | www.epiplastics.com

