

# ExtrutechForm® System

## 6" AND 8" Stay-in-Place Concrete Forms



Our “stay-in-place” concrete form system makes it easy to set up and pour concrete structures. The forms are pre-cut and provide a smooth, non-porous, easy-to-clean surface. They are available in 6” and 8” thicknesses. The forms are ideal for high-moisture areas, and where sanitation is critical. Using ExtrutechForms reduces construction times by providing a finished surface for walls in one step. Walls are ready for trusses, windows, and doors as soon as the concrete is cured.

BASEMENTS

DAIRIES

CAR WASHES

COLD STORAGE

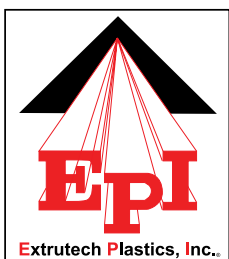
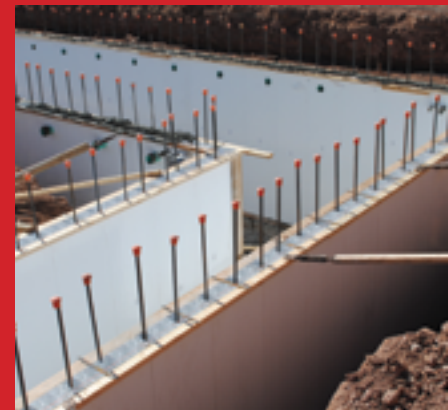
CLEAN ROOMS

BOTTLING PLANTS

FOOD PROCESSING

WASTE WATER PLANTS

AND MORE . . .



**EXTRUTECH PLASTICS, INC.**

888-818-0118 | [www.epiplastics.com](http://www.epiplastics.com)

5902 West Custer Street  
Manitowoc, WI 54220

ISO 9001 QMS Certified



# ExtrutechForm<sup>®</sup> Specifications

## ExtrutechForm<sup>®</sup> Advantages:

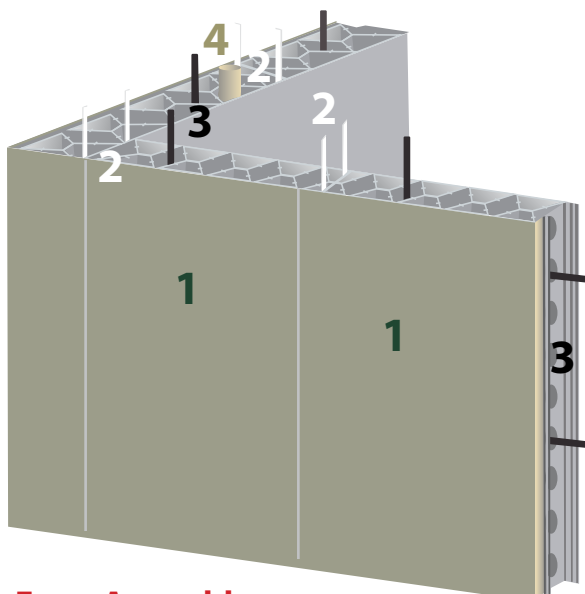
- Quick installation
- Water proof and corrosion proof
- Two-foot wide panels = fewer seams
- Custom-cut panel kits to 25' feet long
- Snaps together for quick installation
- Double spline, e-locking system
- Panels will not rust, rot, flake, or yellow
- Resists mold, mildew, and bacteria growth
- Forms have honeycomb interior walls for maximum panel stability
- Protective film that is easy to peel off and keeps panels clean during construction
- Extrutech Form's exclusive, patented, E-locking system, locks panels together



US Patent #: 8,677,713  
CA Patent #: 2833,490  
MX Patent #: 344648

**P624 (6" FORM)**

**P824 (8" FORM)**

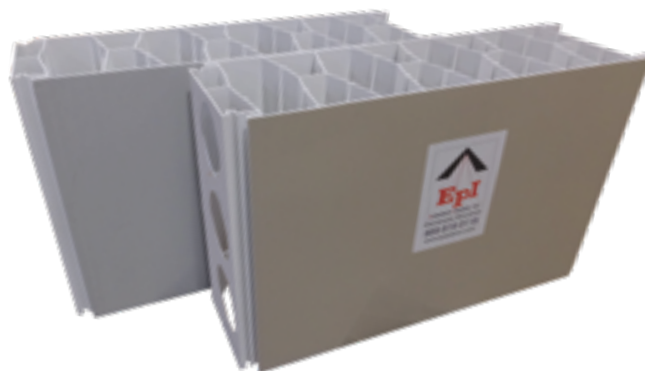


## Form Assembly:

1. 2-Foot Wide Panels
2. Double Spline E-Locking System (Insert two splines at each joint to lock the panels together, for secure leak-proof joints)
3. Horizontal and Vertical rebar (per project specifications)
4. Electrical Chases (as needed)



We can add 2" of foam insulation to the 8" P824 Insulated Form (R-10)



8" P824 Forms come in gray or beige, as well as white

# Pools and Water Tanks



## Curved Walls

Use our curved arc forms with our two-foot forms to create curved structures. From swimming pools to ponds, and wastewater treatment plants, you can choose the number of Arc Forms needed to make the circumference you need. Create curved structures up to 60 feet in diameter and up to 12 feet tall.



**4 1/2° Corner**  
6" - P645FT  
8" - P845FT



**22 1/2° Corner**  
6" - PC6225  
8" - PC8225



## Swimming Pools

Use our concrete forms to construct swimming pools and other water structures. The forms can be used in conjunction with liners, and reduce building times.

# Car Washes



## Car Wash Walls

Reduce construction times by using the ExtrutechForm® system. The forms come with a protective film that can be removed after installation, leaving a clean finished surface that requires no additional applications.

The panels are designed to withstand the daily rigors of car washes as well as exterior weather conditions.

Combine Extrutech concrete forms with our interlocking liner panels, doors, and other products that work seamlessly together.



[Learn More](#)



[www.eplastics.com](http://www.eplastics.com)

# Dairy Structures



## Robotic Milking Room

Create free-standing interior concrete walls inside your dairy barns, that are easy to clean and reflect light to make your interiors brighter.



## Barn Walls

Build the walls of your barn with Extrutech's form system and make it easy to clean and maintain your primary walls.

## Rotary Support Walls

Use our curved forms to create the concrete foundation for your rotary. By using our forms you can easily ensure that your dimensions are accurate.

The foundation is easy to clean and will not chip or decay over time.



# Basements



## Residential: Walk-out Basement Garage

This walk-out-basement includes garage and storage space. The foundation was created quickly using Extrutech's form system. Once the concrete cures, the exterior walls were ready for backfill. The interior and exposed exterior walls are bright, and easy to clean, without flaking or yellowing.



## Dairy: Milk Transfer Tunnel

Keeping dairies clean and sanitary is easy when key spaces use our easy-to-care-for form walls. This transfer tunnel is easy to construct, as it reduces the number of steps to get from pour to finished.

## More Basement Applications:

- Residential Homes
- Safe Rooms
- Crawl Spaces
- Wine Cellars
- Storage Areas

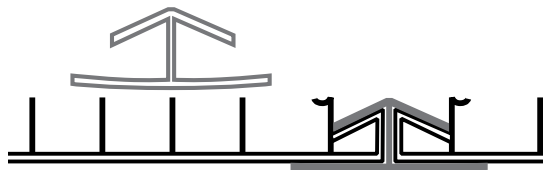
# Extrucrete™ Tilt-up Walls

Extrucrete™ tilt-up walls combine the strength of concrete and the easy-to-clean finish of Extrutech Poly Board panels to create a superior sanitary surface that is durable and easy-to-clean.

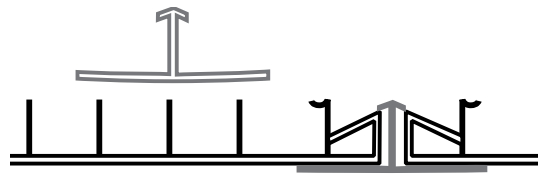
Using Extrucrete™ panels with your precast, structural walls creates a prefinished surface that reduces construction time of your project. The end result is a bright white, sanitary, easy-to-clean wall.

## Extrucrete™ Advantages:

- Designed for high moisture areas
- Extremely easy to clean with a high pressure washer
- Fewer seams equal more resistance to water and corrosion
- Great for areas requiring sanitation
- Guaranteed not to rust, rot, flake, or delaminate
- No ongoing maintenance
- Bright-white finish reflects light and brightens spaces
- Class A ASTM-E84
- US Patent #: 9,366,029 B2



**Splice Cap**



**Expansion Cap**



**Learn More**



**CW9000**

US Patent #: 9,366,029 B2

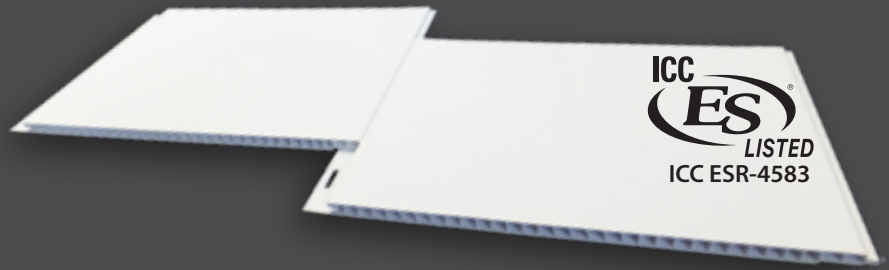


## Extrucrete™ Uses:

- Dairy Barns and Milking Parlors
- Car Washes
- Cheese Processing Plants
- Food Processing Centers
- Clean Rooms
- Bottling Plants
- Cold Storage
- Laboratories
- Other Tilt-up Construction

# Additional Building Solutions

## Wall & Ceiling Panels

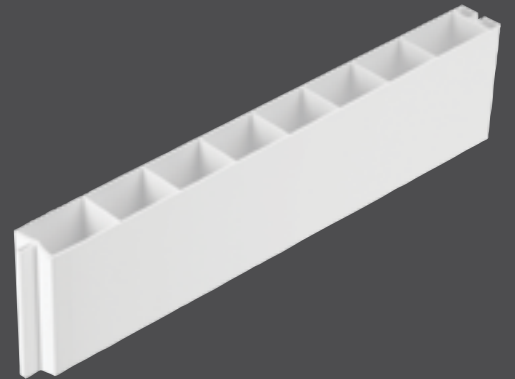


**Poly Board Flat Panels** have a smooth reflective surface that dramatically improves overall reflective lighting. These easy-to-clean panels are available in custom lengths (cut to the inch) and continue to look great in corrosive or high moisture areas.

## Partition Walls



**Partition Walls** allow you the flexibility to assemble interior demountable walls faster and easier. Our durable, strong, multi-chamber, interlocking wall panels are made of rigid, virgin polymers. With a finished surface on both sides of panel, it never needs painting.



## Single & Double Doors



**All-Weather Doors** are corrosion proof, bright white, with a smooth flat 1 3/4" thick PVC door panel and solid PVC frame with a weather strip sealed edge. They are available in standard or custom sizes. Our doors are great for high moisture areas.



**EXTRUTECH PLASTICS, INC.**

888-818-0118

info@epiplastics.com | www.epiplastics.com

ISO 9001:2015 QMS Certified

