

Brighten Your Car Wash Bays with Panels from EXTRUTECH



ICC
ES
LISTED
ICC ESR-4583

Wall and Ceiling Panels

Are you looking for a better way to brighten your walls and ceilings? Need something that can help lower your lighting bill? Prevent salt and cleaners from eating away at your walls? Reduce the amount of time spent washing your walls? Use milder cleansers to keep them sparkling clean and bright? Have a safer, brighter environment?



EXTRUTECH PLASTICS, INC.

888-818-0118 | www.epiplastics.com

5902 West Custer Street

Manitowoc, WI 54220

ISO 9001:2015 QMS Certified



P1300 Flat Panel
P1600 Flat Panel



Walls & Ceiling



Yellow Wall Panels



Colored Accent

12" & 16" Flat Panels

For Walls and Ceilings

Poly Board® Flat Panels have a smooth reflective surface that dramatically improves overall reflective lighting. The panels are available in custom lengths (cut to the inch).

The panels are easy to clean and continue to look great in corrosive or high moisture areas.

Colored panels have a 1 year limited warranty when used in interior applications. See product warranty for details and limitations.



12" (P1300) Flat Panel Colors

1/2" Panel Trims Extrutech Plastics provides a variety of PVC trims, included those shown below, to ensure that your walls and ceiling look sharp and consistent.

Inside Corner



Drip Edge



Corner Trim



J-Trim



J-Trim with Drip Edge

24" Flat Panels

For Walls

24" Poly Board® Flat Panels are made to cover a large area quickly. They are 24 inches wide and available in custom lengths (to the inch) to fit your project needs. The smooth reflective surface also improves overall reflective lighting.



P2400 Panel

PRODUCT DATA:

- Dimensions:
 - » P1300: 12" Panel 1/2 in. x 12 in. x 4 ft.-20 ft.
 - » P1600: 16" Panel 1/2 in. x 16 in. x 4 ft.-20 ft.
 - » P2400: 24" Panel 1/2 in. x 24 in. x 4 ft.-20 ft.
- Weights:
 - » P1300/1600/P2400: 0.69 lbs./sq.ft.
- Colors:
 - » P1300: white, blue, yellow, red, green, gray, beige and wood grain
 - » P1600/P2400: white, beige, and gray
- Twenty year limited warranty for white panels used in interior applications
- 100% virgin PVC
- Do not support mold or mildew per ASTM D3273 & D3274
- CSI- Master Format # 06600 (06 64 00)
- Meets ASTM E84-05 and CAN/ULC S102.2-03
- Class A rating for smoke and fire
- Certified by ICC-ESR-4583

STORAGE AND HANDLING:

Materials are shipped common carrier in standard packaging that contains 5 panels per poly-bag. Store flat in a clean, dry area until ready for use.



View all 1/2" Flat Panels

P2400 Flat Panel



Self-Serve Bays



Car Wash Tunnel



Blue Accent Panels

Additional Car Wash Building Solutions

EXTRUTECH Form Walls



Concrete Form Walls offer a non-porous, pre-finished structural concrete wall with a bright white surface on both sides, reducing finishing and installation time while providing an easy to clean solid structural wall. Limited Lifetime Warranty.

ICC ES Listed: ESR-4250, ESL-1129, and ESL-1209

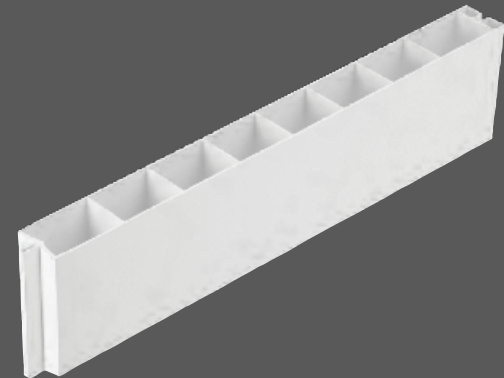


US Patent #: 8,677,713
CA Patent #: 2833,490
MX Patent #: 344648

Partition Walls



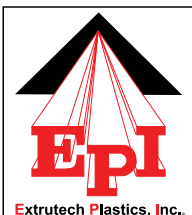
Partition Walls allow you the flexibility to assemble interior demountable walls faster and easier. Our durable, strong, multi-chamber, interlocking wall panels are made of rigid, virgin polymers. With a finished surface on both sides of panel, it never needs painting.



Single & Double Doors



All-Weather Doors are corrosion proof, bright white, with a smooth flat 1 3/4" thick PVC door panel and solid PVC frame with a weather strip sealed edge. They are available in standard or custom sizes. Our doors are great for high moisture areas.



EXTRUTECH PLASTICS, INC.

888-818-0118

info@epiplastics.com | www.epiplastics.com

ISO 9001:2015 QMS Certified

