



# EXTRUTECH PLASTICS, INC.

"Custom Extruder of Close Tolerance Profiles"



## Extrutech PVC Suspended Ceiling Grid System

For Only 2x2 and 2x4 Tile Sizes

For Ceiling Grid panels sizes of (23 3/4" x 23 3/4") or (23 3/4" x 47 3/4")  
Use Only Flanged Light Fixture with MAXIMUM SIZE 23 3/4" x 47 3/4"

### Planning the room layout

In planning the layout you will want to maintain a balance look to the layout with equal size panel at all four walls. To achieve this, it is good to do a layout on paper to get an idea on the layout. Start by dividing your room in half in both directions and determine your lighting layout, if using four foot recessed lighting you should run your main runners parallel. Ceiling configurations we require the main runners be installed on 2 foot on center. On 2x2 and 2x4 layouts the grid will "grow" relative to a 24" or 48" on-center grid. Follow U.B.C. Standard 47-18 for ceiling installation. Grid is for standard Panel sizes of 2 x 2 and 2 x 4 system with **all support wires must be located at 24" on center on main runners and at center of 4 foot cross tees.**

### Finished Ceiling Height

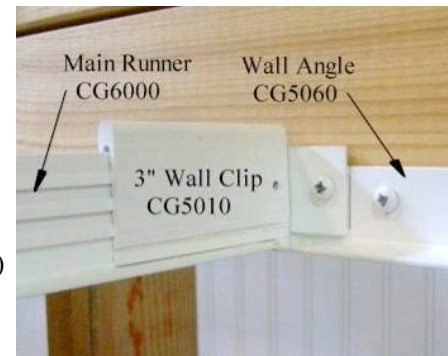
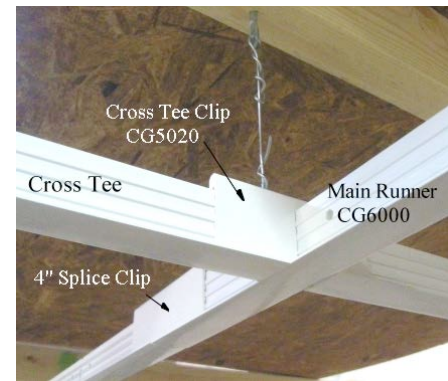
Once you have the desired grid layout you need to determine your finished ceiling height. Snap a level chalk line one inch above the finished ceiling height around the room. Checking that the line is level as you go around the room, this will locate the height your wall angle will be installed at.

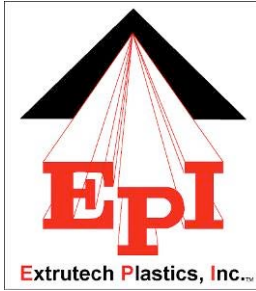
### Wall Angle Installation (Wall Angles are available in 8 and 12' lengths)

At a corner of the room hold the top of one of the wall angle legs at the chalk line. Mark the position of the first couple stud locations. Drilling 1/8" screw holes at stud locations (Max two foot on center) and secure with 1 1/4" truss head screws. Butt the Wall Angles together along the face of the wall and at the corners as you continue around the room in the same manner.

### Wall Clip Installation

Using your grid layout plan, layout the Main Runner locations from the center of the room out to each side. Center and install wall clips at the just marked locations for the *Main Runners*. Position the Wall Clips so the center of the clip is centered on your *Main Runner* locations and the clips open face sits on top of the installed Wall Angle. Fasten Wall Clips thru wall angle with 1 1/4" truss head screws or other Flat head Screw. Finish installing the Wall Clips at each end for the Main Runners and repeat the same process for the Cross Tee locations on the opposite walls.





# EXTRUTECH PLASTICS, INC.

*"Custom Extruder of Close Tolerance Profiles"*



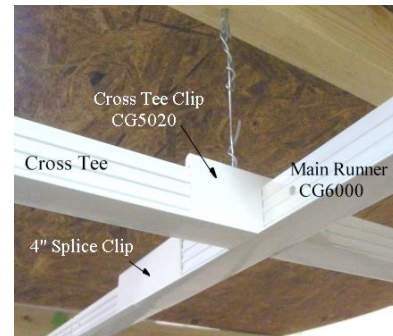
## Extrutech PVC Suspended Ceiling Grid System

### Lag eye screw location Installation

Use a string wrapped around the installed Wall Clips mark the center most Main Runner and center cross tee location. To line up the main runner hanger holes with the lag screws offset by 1" from the center of the cross tee line the lag screw and install. Repeat at **24" on center the length of, each of the Main Runners and center of 4 foot Cross Tee's** so all support wire's are no more then 24" apart, on center to the ceiling structure above. Ceiling configurations we required the main runners be installed on 2 foot on center.

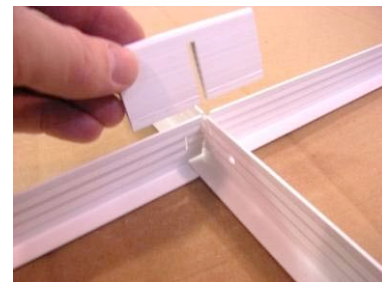
### Hanger Wire and Main Runner Installation

Using a string as the center location as a guide to mark the cross tees, align one of the slots of the main runner and temporary hold in place with a hanger wire, marking and cut to length the runner as required. Follow U.B.C. Standard 47-18 Sec 47.1812 Installation  
NOTE: CUT 1" Inch off the end of the Main Runner that is to butt to the Wall Angle to allow for the 1" Wall Angle width. Once cut to length install hanger wire thru the lag screw and one of the holes either side of the grid slots in the main runner, wrapping the ends of the wire three times around it's self at each end. Install additional lengths of main runners as needed by snapping half of a SPLICE CLIP over each end of the two runners and fasten in place with 1/8" Dia x 1/4" pop rivet on each side. Snap the main runners into the wall clips at each end and fasten in place with a pop rivet.



### Cross Tee Installation

Starting at one side of the room measure the distance between the first main runner and wall angle and cut the female end of the cross tee's measuring from the bottom face of the male side to the bottom face of the female side, so the bottom face fits between the main an the wall angle. Push the male side of the cross tee into the slot of the main runner and install the next full cross tee on the opposite side joining the dovetail connections together and snapping a cross tee clip down to the face of the two cross tee's. Continue on in the same manner along the one side then working across the room with the full cross tee's. At the other end of the room cut the male side of the cross tee off so the face of the cross tee again measuring the distance between the main runner and the wall angle and snap the cut side into the wall clip and fasten in place with a pop rivet. As this is a PVC grid in larger areas and on longer runs the runners may to look wavy until the ceiling panels are installed.





# EXTRUTECH PLASTICS, INC.

*"Custom Extruder of Close Tolerance Profiles"*

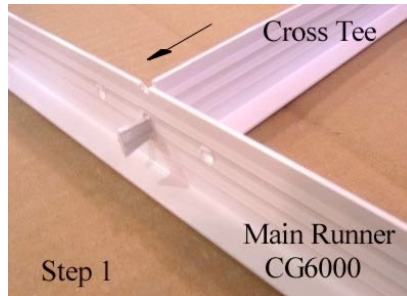


## Extrutech PVC Suspended Ceiling Grid System

### Cross Tee Connection Detail

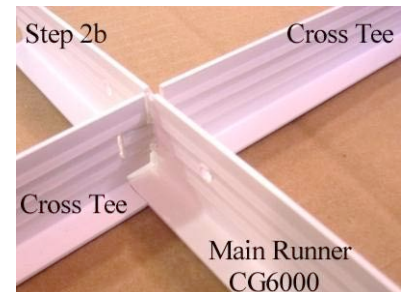
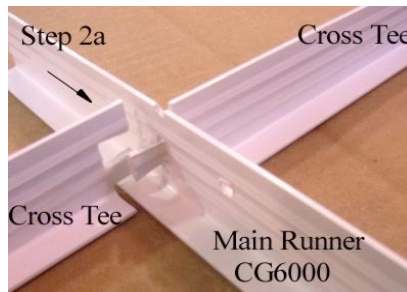
#### Step 1

Insert Male End of Cross Tee Grid into Main Runner



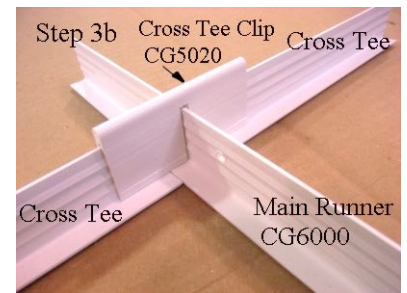
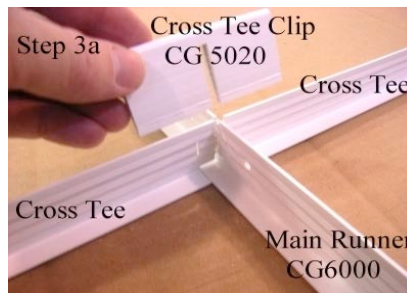
#### Step 2

Slide Female end of Cross Tee Grid Over Male Dovetail End and press in place.

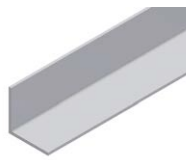


#### Step 3

Slide the 3" Cross Tee Clip down over the intersection of the Cross Tee and Main Runner to the bottom of the grid.



Main Runner  
CG6000



Wall Angle  
CG5060



Wall Clip  
CG5010



Splice Clip  
CG5015



Cross Tee Clip  
CG5020



Hold Down Clip  
CG5050



# EXTRUTECH PLASTICS, INC.

*"Custom Extruder of Close Tolerance Profiles"*



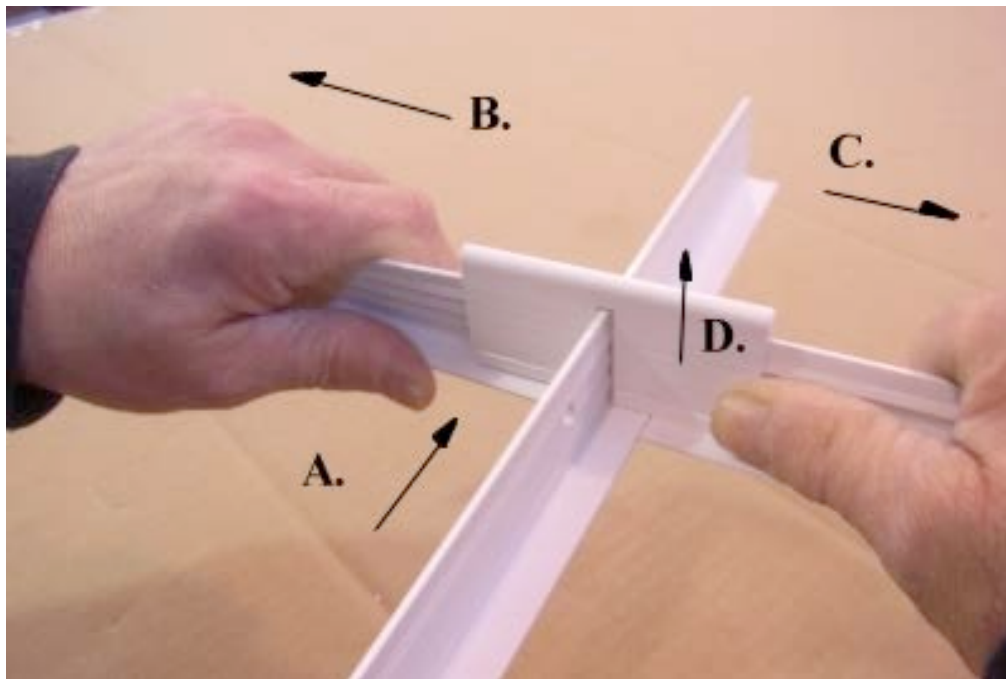
## Extrutech PVC Suspended Ceiling Grid System

**Hold Down Clip's** should be installed at a maximum of 6 inches from each corner along the sides of each of the panel, with 2 per side of each panel. Press the clips down firmly over the grid until the flanges of the clips press firmly to the ceiling tiles.



### TO REMOVE A CROSS TEE GRID

1. A. Twist the female side of the Cross Tee about 1/4" to the side and  
B. Pull that side at the same time. This will allow the female side of the Cross Tee Grid to slide out of the Grid Clip.
2. C. Slide the male end of the Cross Tee Grid out the other side of the Grid Clip.
3. D. Slide the Cross Tee Clip off the Main Runner



Please request a Grid Sample for review prior to Order

**Review Fit of Light Fixtures prior to Order**

**Review Fit of Panels prior to Order**



# EXTRUTECH PLASTICS, INC.

*"Custom Extruder of Close Tolerance Profiles"*



## Extrutech PVC Suspended Ceiling Grid System

### Allowance for Light Installation

Install Light Fixture using their own means of support. **DO NOT USE THE GRID AS A MEANS OF SUPPORT FOR LIGHTING.**

Follow U.B.C. Standard 47-18, Sec. 47.1813 for lighting installation.

NOTE: 23 3/4" x 47 3/4" is the maximum allowable out to out size for light fixtures to fit inside the grid. Cut the Cross Tee Clips back to 1/4" of center and nip off bottom third of Clip on fixture side to allow for clearance of fixture flange.



GRID SIZE: Two Foot by Four Foot Grid Size

Center to Center Dimension 24" x 48"

Inside Rib ID: 23 13/16" ID x 47 13/16" ID

Face Flange ID: 23" ID x 47" ID

Clip to Clip ID: 23 3/4" ID x 47 3/4" ID - Clips are 1/4" wide across the top face



Standard Flanged 2 x 4 Light Fixture

Nominal Size 2' x 4'

Product Size 23 3/4" x 47 15/16"

Face Size at Grid 23 3/4" x 47 3/4"

- Must check actual size of fixture for fit.



Standard Flanged 2 x 4 Light Fixture

In Extrutech Suspended Ceiling Grid with main runners shown as across the front face of photo. **ALL FIXTURES NEED TO BE SELF SUPPORTED independent of Grid.**



# EXTRUTECH PLASTICS, INC.

*"Custom Extruder of Close Tolerance Profiles"*



## Extrutech PVC Suspended Ceiling Grid Requirements

### Check List:

\_\_\_\_ Received and Reviewed Grid Sample Date: \_\_\_\_\_ By: \_\_\_\_\_

\_\_\_\_ Received and Reviewed Panel Sample Date: \_\_\_\_\_ By: \_\_\_\_\_

### **\*\*REVIEWED FIT OF OTHER PRODUCTS \*\***

Date: \_\_\_\_\_ By: \_\_\_\_\_

\_\_\_\_ Light Fixture Size: \_\_\_\_\_ x \_\_\_\_\_ Have checked actual Light Fixture \_\_\_\_\_

\_\_\_\_ HVAC Fixture Size: \_\_\_\_\_ x \_\_\_\_\_ Have checked actual HVAC Fixture \_\_\_\_\_

• Room Size: \_\_\_\_\_ x \_\_\_\_\_ Ceiling Height \_\_\_\_\_

#### • Product use:

\_\_\_\_ Manufacturing    \_\_\_\_ Agriculture    \_\_\_\_ Retail Area  
\_\_\_\_ Office Area    \_\_\_\_ Clean Room    \_\_\_\_ Home Use

#### • Ceiling Panel, Tile Manufacturer:

\_\_\_\_ Extrutech Plastics, Inc.    Require End Caps ? \_\_\_\_\_

\_\_\_\_ Other    Company Name \_\_\_\_\_

#### • Ceiling Panel, Tile Size:

2' x 2' Nominal Size    Actual size 23 3/4 x 23 3/4"    Different size \_\_\_\_\_ x \_\_\_\_\_

2' x 4' Nominal Size    Actual size 23 3/4 x 47 3/4"    Different size \_\_\_\_\_ x \_\_\_\_\_

#### • Grid Manufacturer:

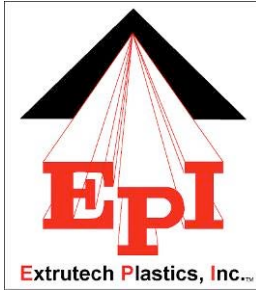
Grid Size: \_\_\_\_\_ x \_\_\_\_\_

\_\_\_\_ Extrutech Plastics, Inc.

\_\_\_\_ Other    Company Name \_\_\_\_\_

### Cleaning Requirements:

\_\_\_\_ General Cleaning    Once a week \_\_\_\_\_ Month \_\_\_\_\_ Year \_\_\_\_\_



# EXTRUTECH PLASTICS, INC.

*“Custom Extruder of Close Tolerance Profiles”*



## Extrutech PVC Suspended Ceiling Grid System

### Cleaning and Maintenance

We recommend the following maintenance and cleaning program to keep your panels looking great. Never use abrasive cleaners, chemicals, or brushes on your panels, and it is always a good idea to test a cleaner on a small area of panel. A few things to consider when discussing which cleaners to use with cleaner suppliers are the environment your panels are in (carwash, residential, or agricultural), your type of water (soft or hard), types of grease used in the area and soil type for your area (clay, etc.). Do not use cleaners that are solvent based (anything distilled) or contain a caustic acid.

**General Cleaning** – When properly maintained, our rigid PVC maintains its original profile and gloss. Use a damp cotton cloth to wipe down the panels as needed. Your panels may be wiped down using off-the-shelf lime and soap scum removal products.

**Cleaning Products** - For cleaning Extrutech Grid and Extrutech Panels, we recommend a mild detergent. Soap scum removers work very well. a soft cloth, Formula 409<sup>©</sup>, or other multi-purpose cleaners